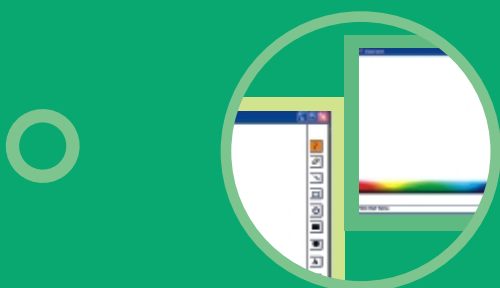


Phone: (216) 923-1404
Toll Free: (877) 841-3332
Fax: (216) 373-6784
www.braxtonconsulting.net



**we put the
Professional
in your
Development**



TECHNOLOGY INTEGRATION, HANDHELD, INTERACTIVE WHITEBOARDS, INTERNET, AND DISTANCE LEARNING
LEARNING STYLES, MULTIPLE INTELLIGENCE, DIFFERENTIATED INSTRUCTION, STATE STANDARDS, MULTI-SENSORY TECHNOLOGY



BETC Professional Development Program

BETC

Professional Development Program



Areas of Professional Development

- › Learning Styles and Differentiating Instruction
- › Technology Integration into the Curriculum
- › Technology Planning

Technology Integration Professional Development

American schools have made great progress since the U.S. Department of Education's report on "A Nation at Risk", improving both their technological capacity and their readiness and ability to use technology to foster the learning of core content and the development of students' skills as communicators, researchers, and critical consumers of an ever-expanding world of information. Determining how best to support and advance high-quality use of educational technology in K-12 settings has continued to be a prominent concern for both educators and administrators.



BETC Technology Integration Professional Development offers a unique approach to technology integration. To often technology is seen in the classroom as an add-on or a tool of reward. We assist teachers in integrating technology into the classroom seamlessly. Additionally, we work with teachers to involve students in the technology integration process, and assist teachers and students in becoming researchers and critical consumers in the technological age.

Technology Planning

Advances in both cognitive science and information technology have the potential to transform education and training in ways previously unimaginable. Advanced technologies under development by U.S. businesses, universities, and government could create rich and compelling learning opportunities that meet all learners' needs, and provide education and training when and where they are needed, while boosting the productivity of learning and lowering its costs. These technologies could play a major role in meeting education and training challenges in the years ahead, and help make the U.S. workforce more competitive globally.

BETC Technology Planning is designed to assist educators in the technology process. We examine all of the factors involved in selecting and implementing appropriate technologies that meet the needs of students, teachers, and all

Steps To Success

- | | |
|----------|-----------------------|
| Step I | Assessment |
| Step II | Information Gathering |
| Step III | Comparison & Planning |
| Step IV | Taking Action |

Learning Styles Professional Development

Research conducted to identify the relationship(s) between academic achievement and individual learning styles has provided consistent support that students do learn differently from each other; student performance in different subject areas is related to how individuals learn, and when students are taught with approaches and resources that complement their unique learning styles, their achievement is significantly increased.

BETC Learning Styles Professional Development Services allows teachers to identify their teaching styles, their students learning styles, and works with educators to develop curriculum that will address student learning styles and differentiate instruction for their students. The sessions examine gender differences, classroom environment, parent empowerment, and much more!



Our Approach

- › Focuses on teachers as central to student learning, yet includes all other members of the school community;
- › Focuses on individual, collegial, and organizational improvement;
- › Respects and nurtures the intellectual and leadership capacity of teachers, principals, and others in the school community;
- › Reflects best available research and practice in teaching, learning, and leadership;
- › Enables teachers to develop further expertise in subject content, teaching strategies, uses of technologies, and other essential elements in teaching to high standards;
- › Promotes continuous inquiry and improvement embedded in the daily life of schools;
- › Is planned collaboratively by those who will participate in and facilitate that development;
- › Requires substantial time and other resources;
- › Is driven by a coherent long-term plan;
- › Is evaluated ultimately on the basis of its impact on teacher effectiveness and student learning; and this assessment guides subsequent professional development efforts.



Our Services will:

- › Empower students to learn
- › Get parents involved
- › Professionally develop teachers to facilitate student learning